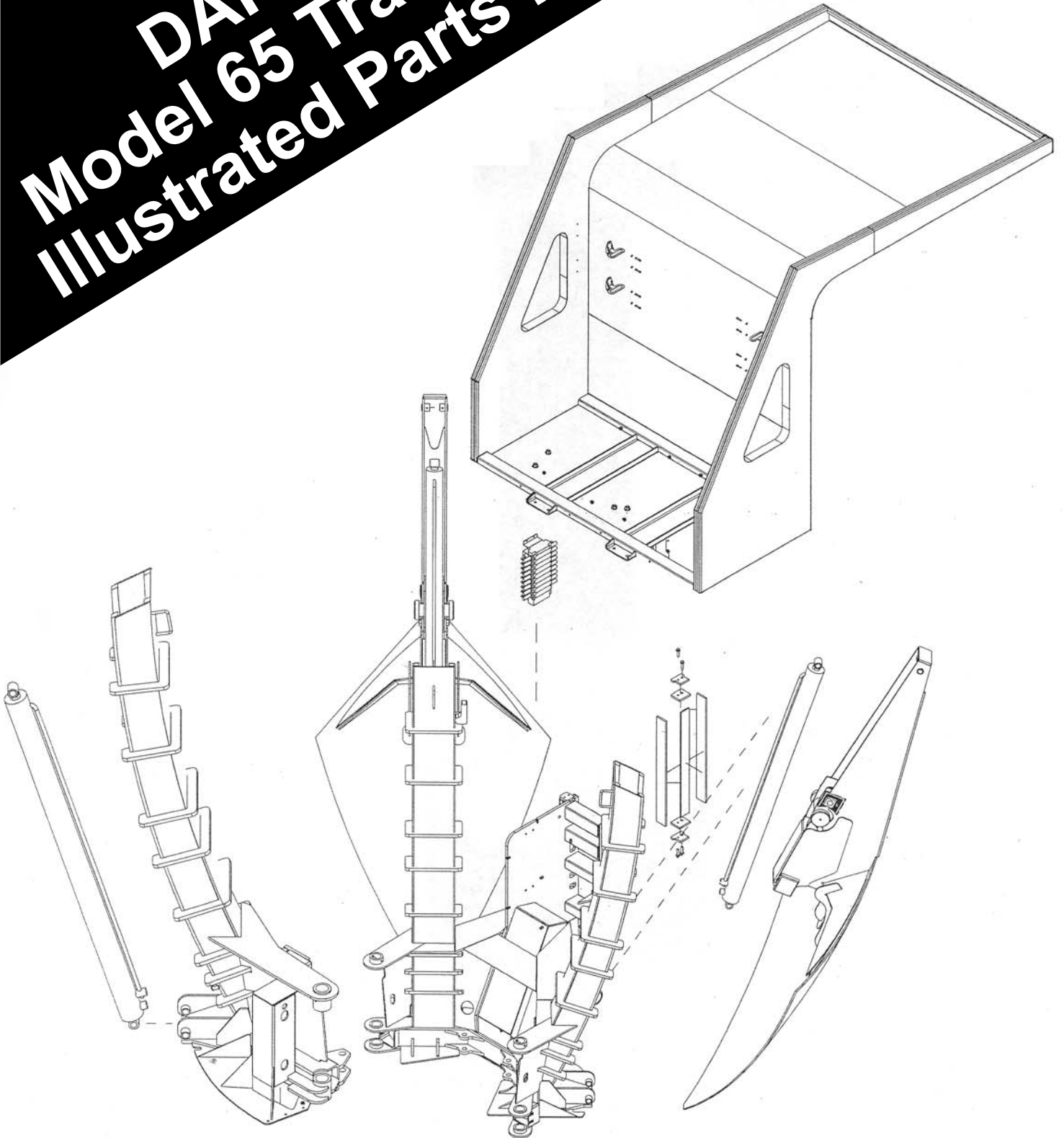


# DAKOTA™ Model 65 Transplanter Illustrated Parts Manual



# **INTRODUCTION**

To ensure optimum performance and safety, always purchase genuine **DAKOTA** replacement parts and accessories. NEVER USE “WILL-FIT” REPLACEMENT PARTS AND ACCESSORIES MADE BY OTHER MANUFACTURERS. Using either inappropriate or unapproved replacement parts and accessories may result in progressive damage to the Transplanter and also voids the warranty. Right and left-hand sides are determined by sitting in the driver’s seat of the truck.

This manual provides a listing to the parts and assemblies that are available as replacement parts. For the most part, common hardware is not listed in this manual. Be sure, however, that when replacement of hardware is necessary, to replace with the same length, diameter, and grade. Quantities listed on each page are not machine quantities, but quantities for the particular assembly being illustrated.

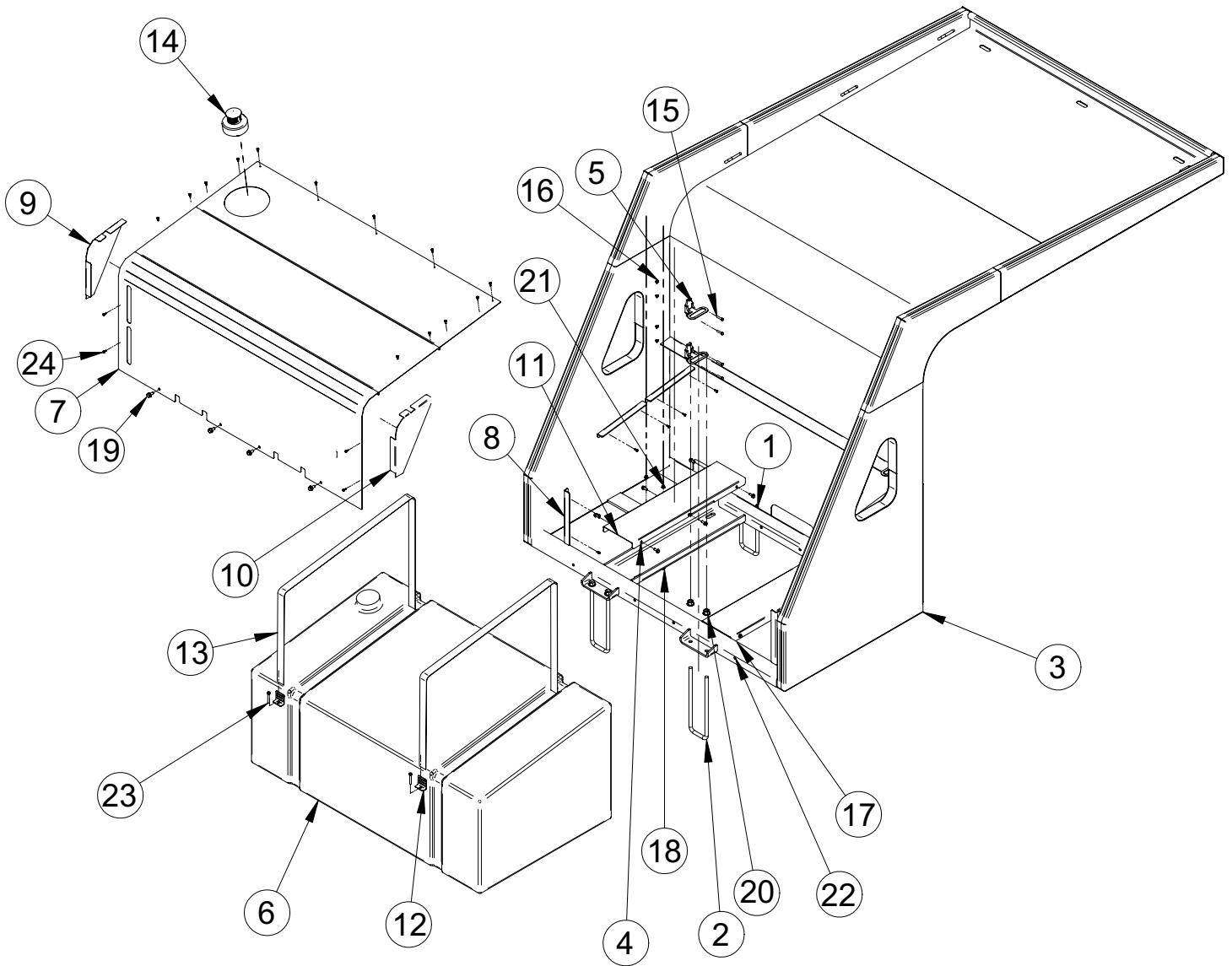
The illustrations used in this Parts manual are for reference to replacement parts only. This manual is not to be used for assembly. If in need of replacement parts or in need of a replacement part not called out in this manual, contact the Parts Department at:

**Dakota Peat & Equipment**  
**833 Gateway Drive NE**  
**East Grand Forks, Minnesota 56721**  
**1 800-477-8415**

## **TABLE OF CONTENTS**

<b>Introduction .....</b>	<b>2</b>
<b>Cab Guard .....</b>	<b>3</b>
<b>Hydraulic Tank &amp; Filter Assembly .....</b>	<b>4</b>
<b>Controller .....</b>	<b>5</b>
<b>Spade .....</b>	<b>6</b>
<b>Left Hand Lift Assembly .....</b>	<b>7</b>
<b>Center Lift Assembly .....</b>	<b>8</b>
<b>Right Hand Lift Assembly .....</b>	<b>9</b>
<b>Truck Bed .....</b>	<b>10</b>
<b>Non-Illustrated Service Parts .....</b>	<b>11</b>
<b>Team Dakota™ .....</b>	<b>12</b>

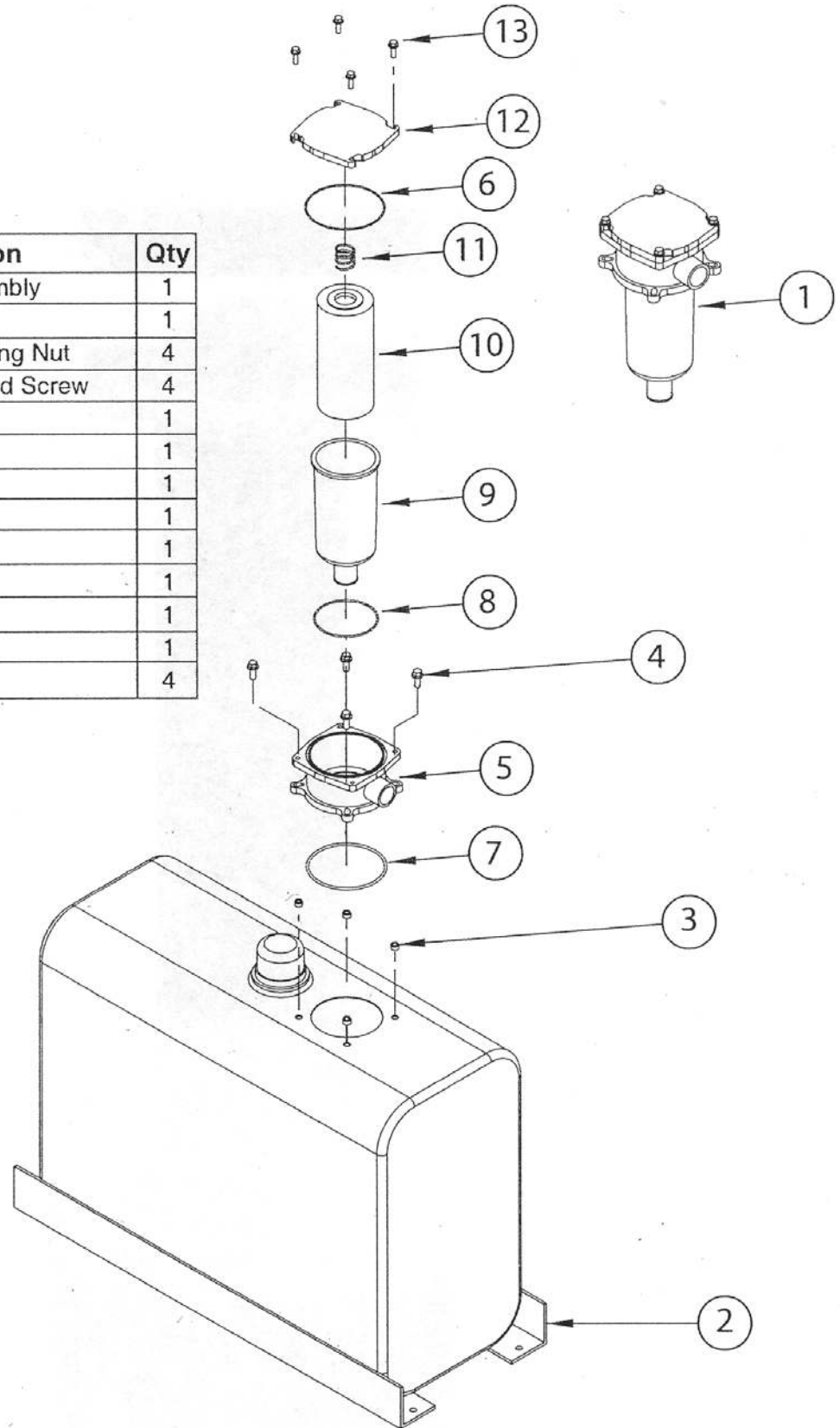
# CAB GUARD



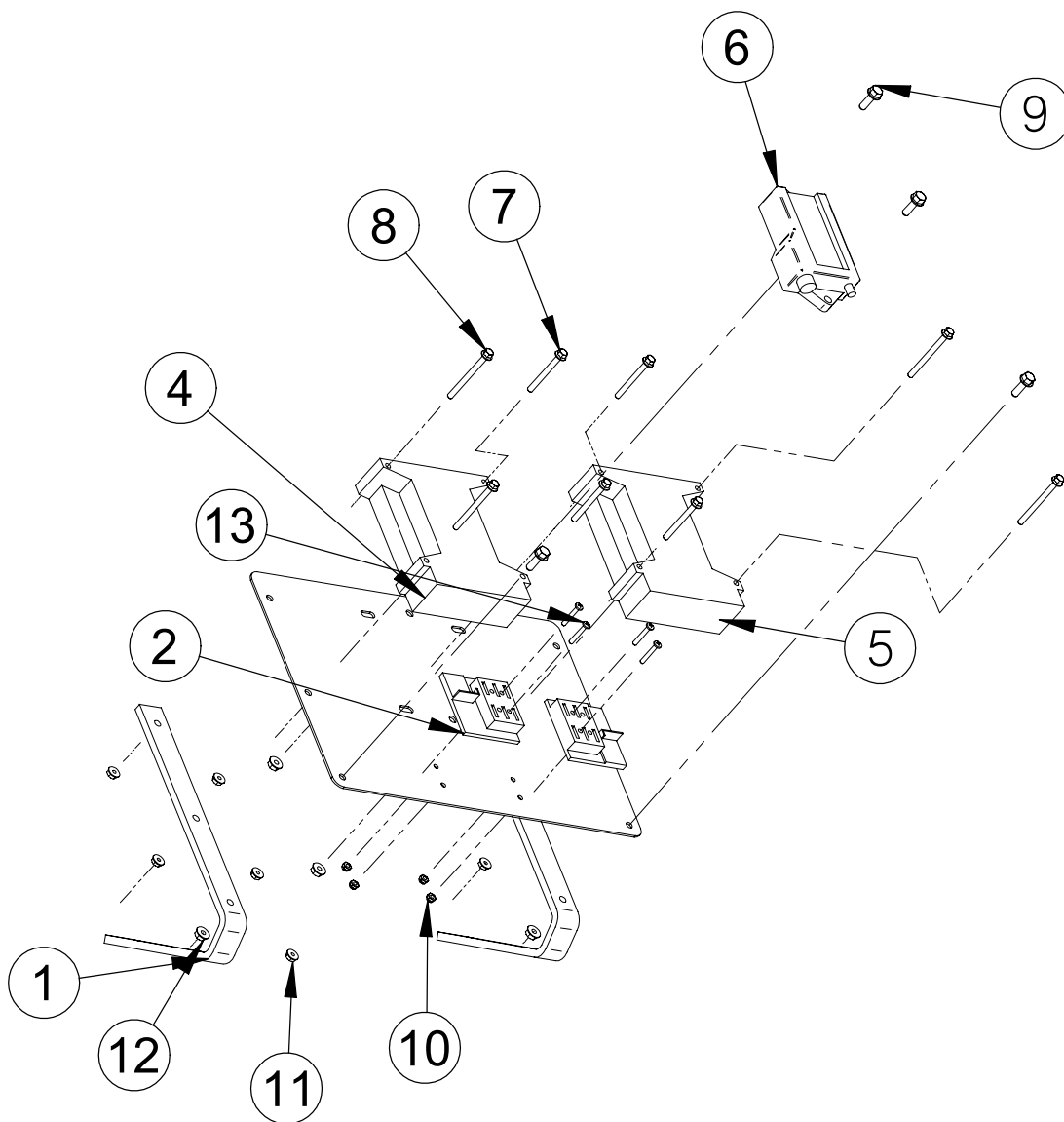
REF	Description	p/n	REF	Description	p/n
1	Spring	13392	13	Strap	15557
2	U-bolt	13410	14	Filler Cap	15856
3	Cab Guard	13647	15	Bolt	18C524
4	Water Pump	13675	16	Washer	25E15
5	Step	14018	17	Flange Head Screw	35C0616
6	Water Tank	15188	18	Flange Head Screw	35C0628
7	Tank Guard	15479	19	Flange Head Screw	35C0816
8	Mount	15484	20	Nut	83D12
9	Tank Guard (LH)	15549	21	Nut	89D06
10	Tank Guard (RH)	15552	22	Flange Head Nut	89D08
11	Cap	15554	23	Cap Screw	SS1C0640
12	Plate	15556	24	Screw	SS84G2510

# HYDRAULIC TANK & FILTER ASSEMBLY

Item	p/n	Description	Qty
1	13611	Filter Assembly	1
2	13681	Reservoir	1
3	13792	Self-Clinching Nut	4
4	35C0616	Flange Head Screw	4
5	14077	Mount	1
6	14078	O-Ring	1
7	14079	O-Ring	1
8	14080	O-Ring	1
9	14081	Canister	1
10	14082	Filter	1
11	14083	Spring	1
12	14084	Cap	1
13	35C0516	Bolt	4

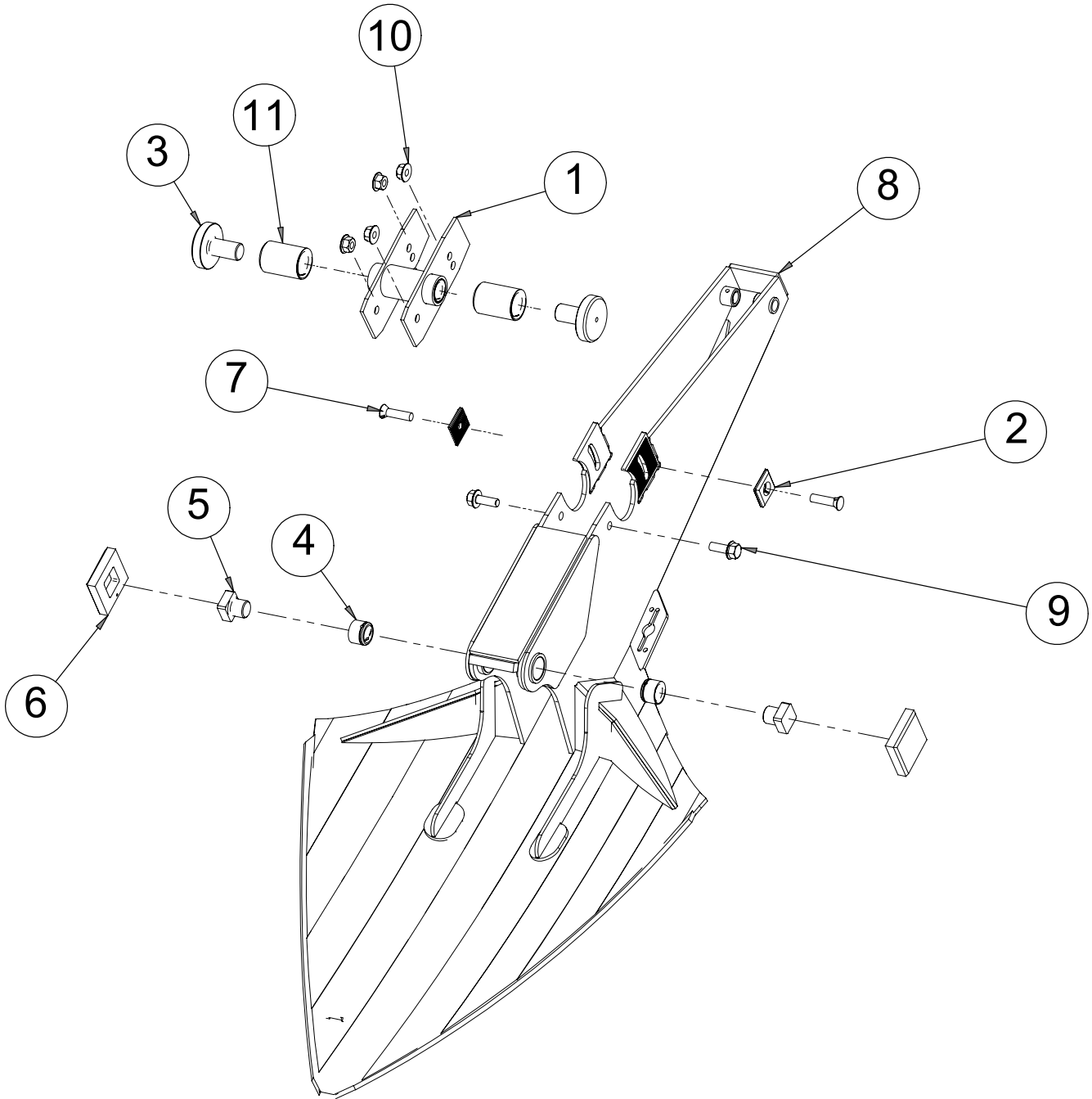


# CONTROLLER



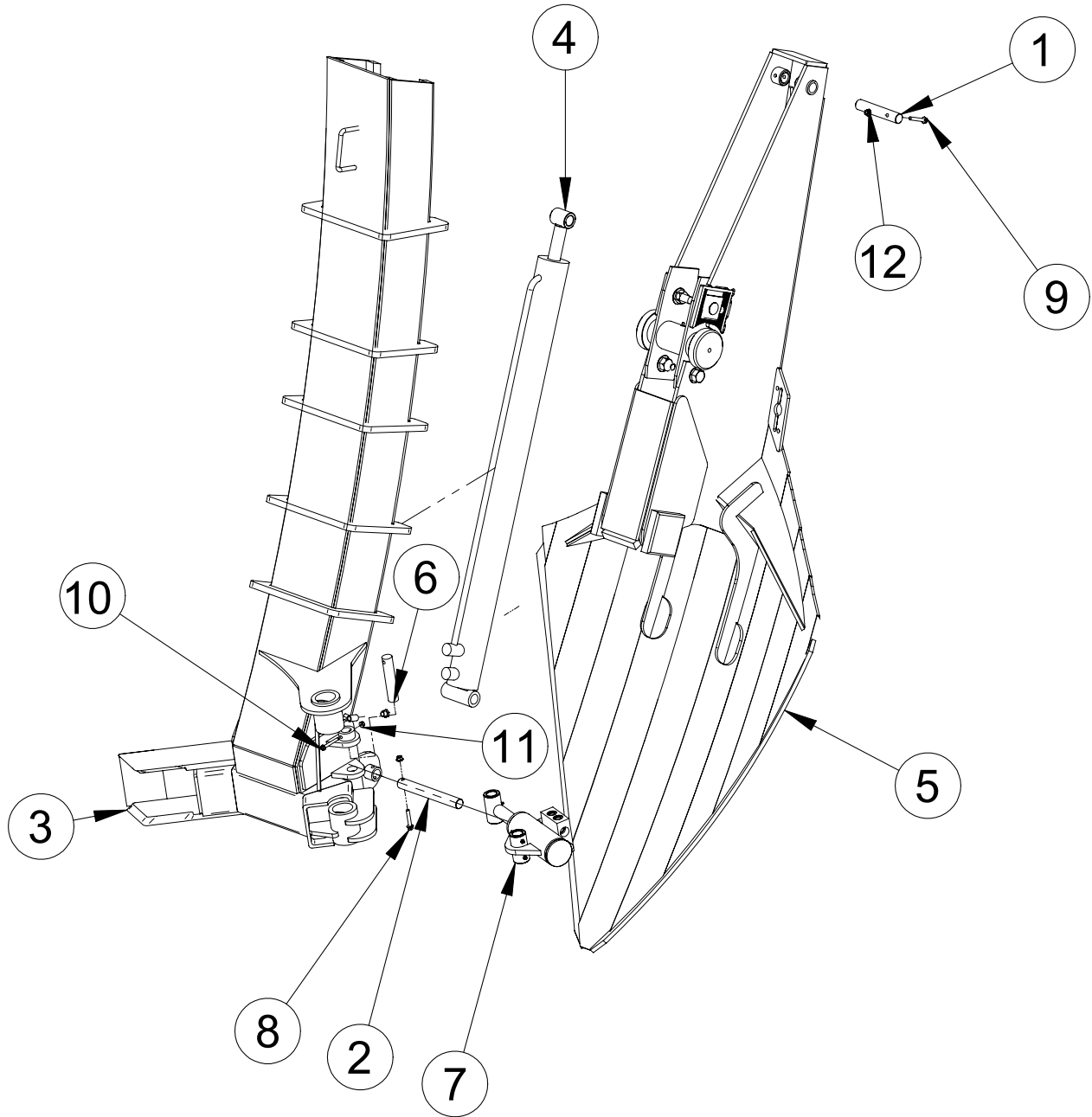
REF	Description	p/n
1	Control Panel Mount	13209
2	Fuse Block	14048
3	Plate	14681
4	Controller A	15564
5	Controller B	15565
6	Radio	15567
7	Flange Head Screw	35C0440
8	Flange Head Screw	35C0448
9	Flange Head Screw	35C0516
10	Nylock Nut	50D10
11	Flange Head Nut	55D04
12	Flange Head Nut	55D05
13	Recessed Pan Head	87G1020

# SPADE



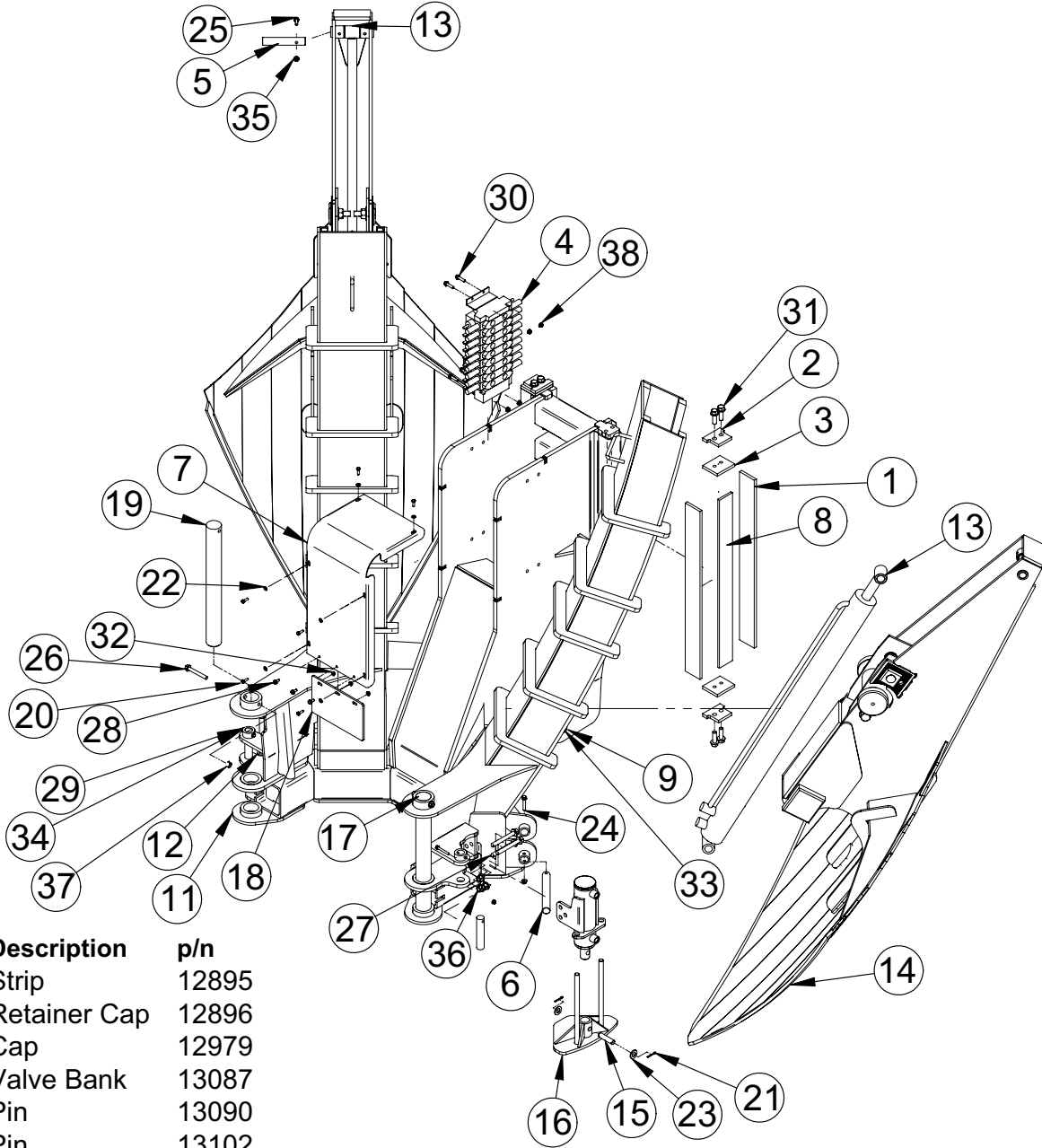
REF	Description	p/n
1	Guide Roller Mount (inc. 11)	12883
2	Pitch Adjuster Block	12888
3	Guide Roller	12889
4	Bushing	12890
5	Spindle	12891
6	Guide Block	12892
7	Countersunk Bolt	13814
8	Spade	14480
9	Bolt	31C1440
10	Nut	83D14
11	Guide Roller Bushing	12885

# LEFT HAND LIFT ASSEMBLY



REF	Description	p/n
1	Pin	13090
2	Pin	13102
3	Gate (RH)	14409
4	Spade Cylinder	14414
5	Arm	14479
6	Pin	14604
7	Gate Cylinder	15421
8	Bolt	31C0636
9	Bolt	31C0640
10	Bolt	35C0540
11	Nut	83D05
12	Nut	83D06

# CENTER LIFT ASSEMBLY



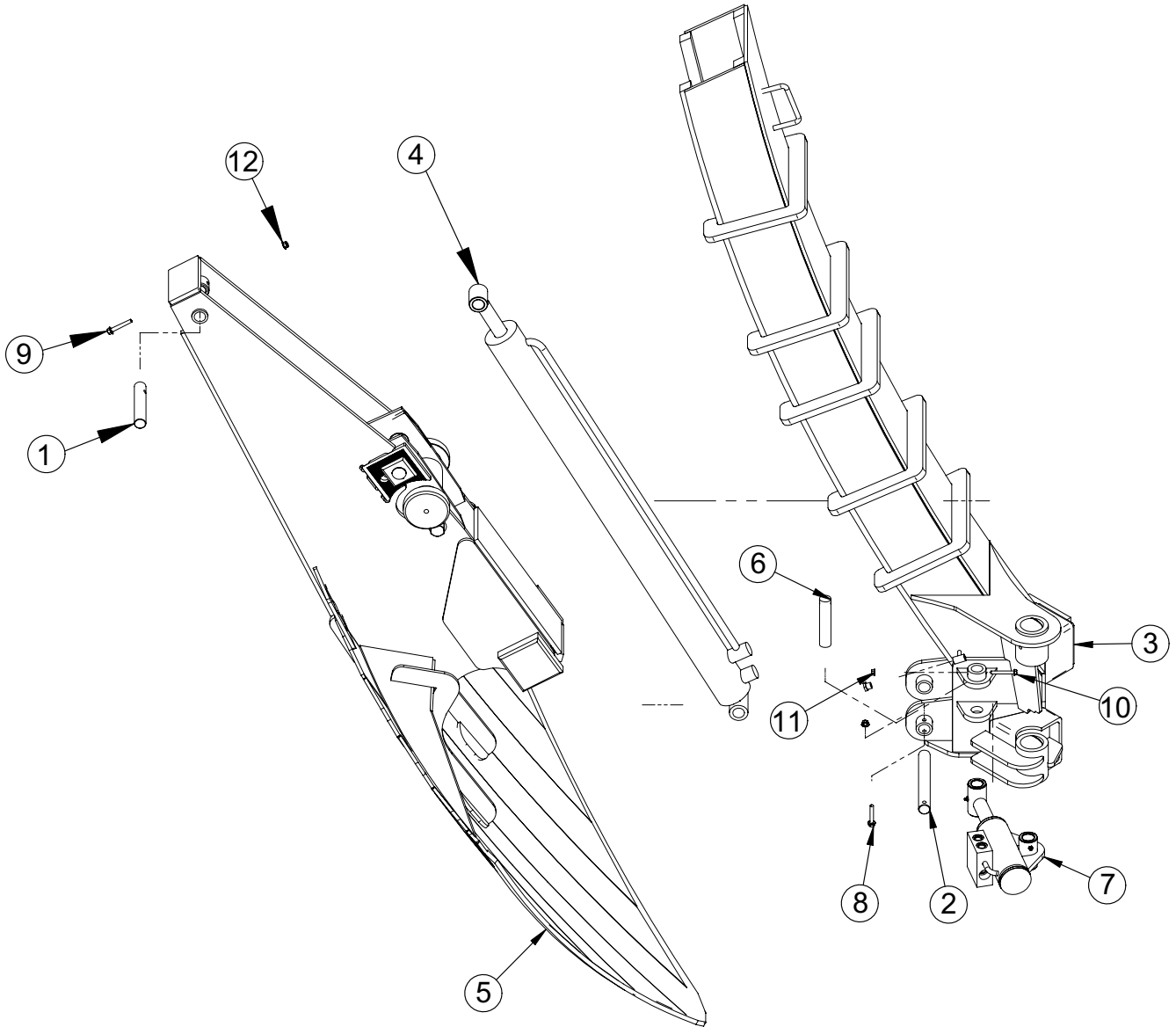
REF	Description	p/n
1	Strip	12895
2	Retainer Cap	12896
3	Cap	12979
4	Valve Bank	13087
5	Pin	13090
6	Pin	13102
7	Cover	13326
8	Side Strip	13712
9	End Cap	13858
10	Pin	13860
11	Lift Assembly	14407
12	Cylinder	14413
13	Cylinder	14414
14	Arm	14479
15	Pin	14593
16	Foot	14598
17	Pin	14604
18	Shield	14608
19	PIN	15594
20	Cap Screw	1C0516

REF	Description	p/n
21	Cotter Pin	1F0620
22	Washer	25E15
23	Washer	25E27
24	Bolt	31C0636
25	Bolt	31C0640
26	Bolt	31C0864
27	Bolt	31C1080
28	Flange Head Screw	35C0512
29	Flange Head Screw	35C0540
30	Flange Head Screw	35C0620
31	Flange Head Screw	35C1032
32	Flange Head Nut	55D05
33	Socket Head Cap Screw	73G0816

REF	Description	p/n
34	Nut	83D05
35	Nut	83D06
36	Nut	83D06
37	Nut	83D08
38	Nut	89D06

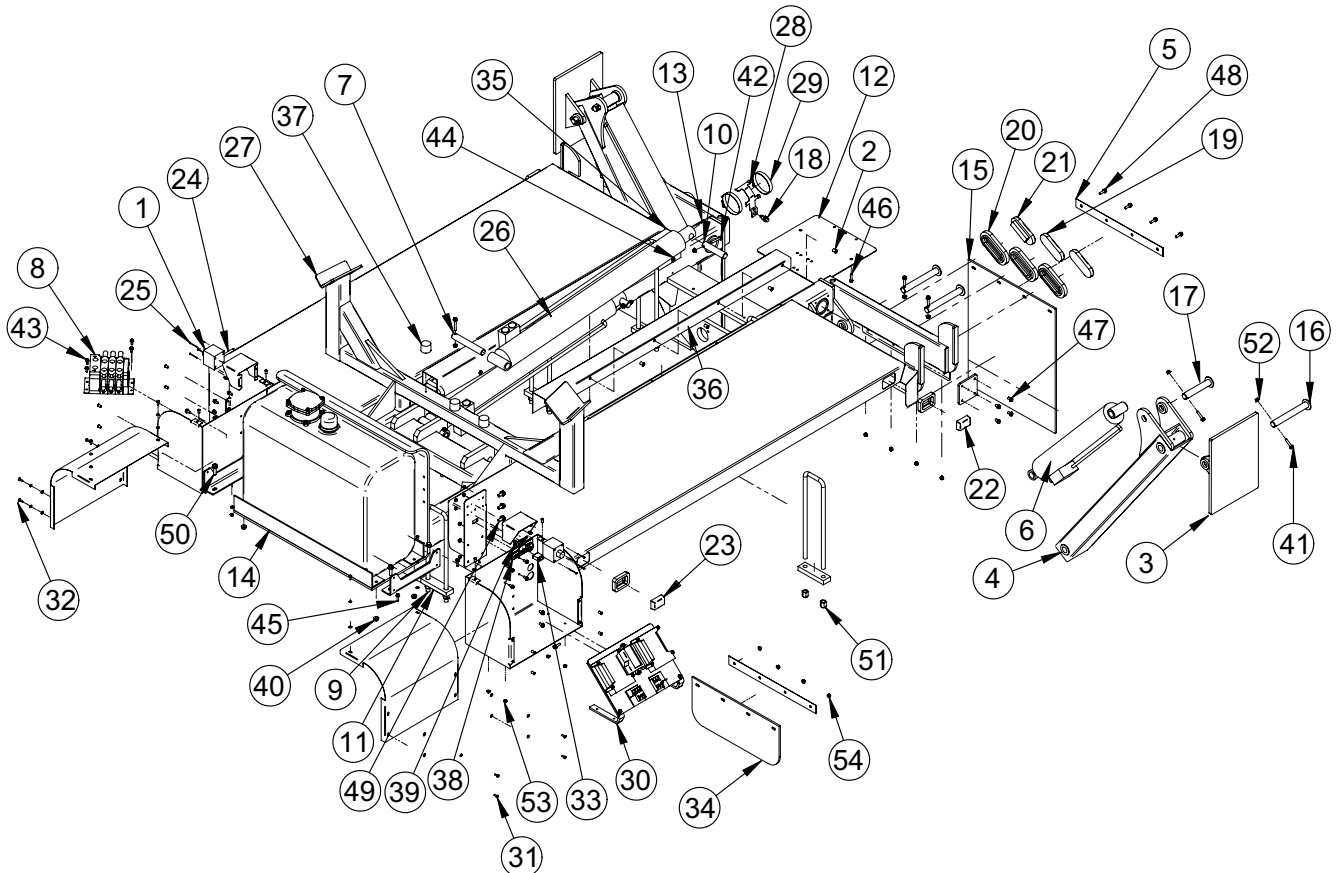


# RIGHT HAND LIFT ASSEMBLY



REF	Description	p/n
1	Pin	13090
2	Pin	13102
3	Gate (RH)	14408
4	Spade Cylinder	14414
5	Arm	14479
6	Pin	14604
7	Gate Cylinder	15421
8	Bolt	31C0636
9	Bolt	31C0640
10	Bolt	35C0540
11	Nut	83D05
12	Nut	83D06

# TRUCK BED



REF	Description	p/n	REF	Description	p/n	REF	Description	p/n
1	E-Stop Switch	11458	25	Machine Screw	14191	49	Flange Head Screw	35C0816
2	Rivnut	11570	26	Cylinder	14415	50	Flange Head Screw	35C0828
3	Ground Pad	12738	27	Truck Bed	14472	51	Nylock Nut	68D12
4	Outrigger Arm	12742	28	Bracket	14670	52	Nut	83D06
5	Backing Plate	12881	29	Hose Clamp	14671	53	Nut	89D05
6	Cylinder	12998	30	Radio Control	14682	54	Nut	89D06
7	Pin	13007	31	Electrical Box	14690	55*		15803
8	Hydraulic Valve	13086	32	Hydraulic Box	14691	*Not Illustrated Hydraulic Hoses, Fittings and Adaptors Assy		
9	U-bolt	13105	33	Valve	14699			
10	Pin	13239	34	Flap	14704			
11	Mounting Plate	13363	35	Fender Cover (RH)	14706			
12	Guide Plate	13374	36	Fender Cover (LH)	14707			
13	Retaining Cover	13474	37	Bumper	14713			
14	Tank w/Filter	13682	38	Decal	14714			
15	Mud Flap	13739	39	Stop Switch Decal	14715			
16	Outrigger Pin, Long	14010	40	Flange Head Nut	89D08			
17	Outrigger Pin, Short	14011	41	Bolt	31C0628			
18	Sensor	14073	42	Bolt	31C0640			
19	Red Taillight	14111	43	Flange Head Screw	35C0512			
20	Grommet	14112	44	Flange Head Screw	35C0516			
21	White Taillight	14167	45	Flange Head Screw	35C0520			
22	Red Marker Light	14170	46	Flange Head Screw	35C0524			
23	Amber Marker Light	14171	47	Bolt	35C0612			
24	Square Grommet	14172	48	Flange Head Screw	35C0620			

# NON-ILLUSTRATED SERVICE PARTS

HYDRAULIC HOSES			WIRING HARNESSSES	
ITEM	ROUTING	P/N	ITEM	P/N
Gate Cylinder	Extend	15791	Main Power	
Gate Cylinder	Retract	15791	Control Panel	13614
Leveler Cylinder	Extend	15793	Control Box Connector	
Leveler Cylinder	Retract	15792	Truck Chassis	13615
Lift Assist		13184	Mast	13613
Mast Cylinder	Extend	13189	Taillight	13861
Mast Cylinder	Retract	13189		
Outrigger (RH)	Extend	15788	MISCELLANY	
Outrigger (RH)	Retract	15788	ITEM	P/N
Outrigger (LH)	Extend	15787	Hydraulic Pump	13094
Outrigger (LH)	Retract	15787	Limit Switch	14073
Spade (Front)	Extend	15794	Water Switch	14120
Spade (Front)	Retract	15794		
Spade (Rear)	Extend	15795		
Spade (Rear)	Retract	15795		
Tilt (From Valve)	Extend	15789		
Tilt (From Valve)	Retract	15789		
Tilt (From Fitting)	Retract	13184		
Mast Valve	Pressure	15790		
Mast Valve	Tank Return	13196		
Mast Valve	Pilot	15796		
Fender Valve	Pressure	13175		
Fender Valve	Return	13182		
Water Pump	Supply	Truck Specific		
Water Pump	Return	13198		
Water Pump	Dump Valve	13198		
Dump Valve	Tank Return	13200		
Main Pump	Supply	13174		

# **TEAM DAKOTA™**

With your purchase of the Dakota Transplanter, you have become an important member of Team DAKOTA. Yet we have found that many of the team members do not know all of the components of Team DAKOTA. Team DAKOTA includes many facets including quality tending and blending equipment, laboratory testing services, agronomy services, top dressing material, and material recommendations. Since you are already aware of the quality and function of the Transplanter, we will inform you of the other Team DAKOTA components.

## **Blending Equipment**

The Dakota Blender™, manufactured by Dakota Blenders, Inc. (another valuable member of Team DAKOTA) is the most thorough blender available in the industry today. For a complete description of the blender, see us on the web at [dakotapeat.com](http://dakotapeat.com) or contact us directly at 1 800 477-8415 for the dealer nearest you. If the size of your operation does not justify the purchase of a blender, blending services are available from Team DAKOTA by Dakota Blenders, Inc. or through numerous sand companies that Team DAKOTA has blending relationships with. Check with us for the participating sand company nearest you.

## **Testing Laboratory**

The testing of sand for USGA spec's can be obtained through another member of Team DAKOTA. Dakota Analytical, Inc. is one of eight laboratories world wide accredited by A2LA to be listed on the USGA's web site as one of the labs to be used in the testing of construction materials for greens and other sports fields. Our lab has analyzed hundreds of sand and mix samples since its establishment and is ready to serve any of your needs.

## **Agronomy Services**

Dakota Agronomics provides root zone and greens construction advice, sand sourcing, and maintenance consultation. Our staff has nearly 20 years of experience. All advice is based upon individual customer needs and desires. If you would like to speak to us on any agronomy issues, contact us either on the web or at 1 800 477-3443.

## **Top Dressing Material**

In cooperation with several universities and soil testing laboratories nationwide, Team DAKOTA has developed a highly concentrated organic material called Dakota Peat.

Dakota Peat is formed principally from partially decomposed reeds, sedges, marsh grasses, and other associated plants. These plants have a unique cellular structure that resists further decomposition. Cells with exceptionally high plant feeding ability are essential for successful development of a plant's root system and the right balance of air and water. This makes it an ideal soil conditioner and growing medium.

Dakota Peat is the finest quality peat from selected deposits, carefully processed to maintain its excellent, agronomic horticultural attributes. It is naturally dried by summer sun and winds; then gently packaged by vibrating machines to preserve its unique cellular structure. Dakota Peat is high in organic content, odorless, and free of harmful substances.

## **Material Recommendations for Use in Greens, Tees Boxes, and Sports Field Maintenance**

The Agronomists at Dakota Peat and Equipment have performed thousands of hours of research into top dressing materials and have many recommendations for maintaining a quality green and healthy turf. One such recommendation is using a mix of USGA spec. sand and Dakota Peat in varying ratios for all situations of green and tee box maintenance. Dakota Peat blends can be utilized in sand-to-peat ratios from 80/20 to 90/10 (depending upon the needs of various turf problems or objectives). Simply stated, the facts are that this combination of components will enhance the quality, resiliency and playability of all surfaces and subsurfaces for future use. This applies to normal top dressing, top dressing prior to over-seeding, and top dressing after coring or other soil tillage practices. Using Dakota Peat/sand blends also helps mend the problem spots that may show up on all courses and/or fields from time to time.

Dakota Peat is the "one" amendment which virtually fulfills all dressing needs for healthy growth and maintenance of golf and sports turf. What makes Dakota Peat different from other peat materials and necessary for sand blends? We believe the following points will explain the benefits of Dakota Peat.

- When used with a tested, spec. sand, the resulting Dakota Peat/sand blend increases the water holding capacity of the sand while allowing excellent water infiltration and air exchange for optimum root growth and turf health.
- The Dakota Peat/sand blend retains fertilizer and pesticides in the upper soil horizon thereby maximizing usage and absorption by the turf and target pests. This limits chemical runoff and leaching potential creating a fertilizer and pesticide cost savings while reducing environmental responsibilities. This increase in retention is due to the unique CEC (cation exchange capacity) of Dakota Peat which greatly increases the blend's capacity for stabilization of leachable inputs and its water holding capacity.
- The "near neutral" pH of Dakota Peat continues to provide the best environment for microbial activity that decomposes thatch. This reduction in thatch keeps the turf as healthy as possible since (as we all know), thatch ties up fertilizer, prevents water infiltration, and is a huge disease "reservoir." Thatch also reduces root mass due to poor gas exchange. Even if using an aggressive aeration program, Dakota Peat/sand blends increase positive results by increasing the ability of the "sterile" sand to hold more fertility and water without inhibiting air exchange and water infiltration.
- The humic acid content of Dakota Peat aids in the gas exchange through the soil surface plus water infiltration by promoting soil particle aggregation. Its fulvic acid content helps stimulate root growth into core areas and also into any new root zones.
- Ideal particle size and density allows the Dakota Peat to become "part" of the sand since most of the particles fit the profile of the sand and stay there.

**The goal of Team Dakota is to be your one-stop center for all of your golf course and sports field questions, needs, and equipment. For additional information, contact us either on the web at [dakotapeat.com](http://dakotapeat.com) or by phone at either 1 800 477-8415 or 1 800 424-3443.**